

CRUISE

SOUTH AUSTRALIA

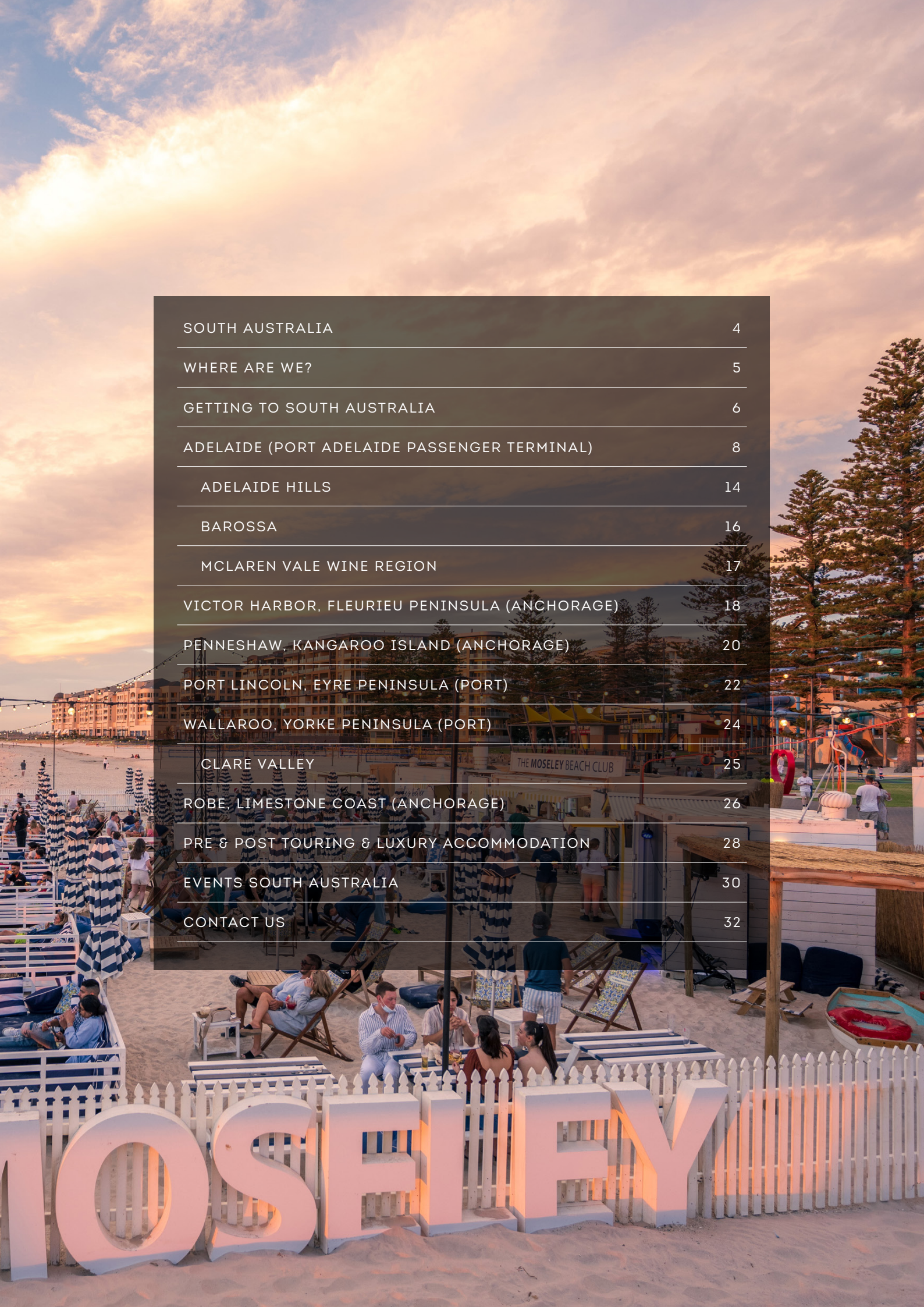


SOUTHAUSTRALIA.COM

MOSELEY BEACH CLUB GLENELO
ADELAIDE

CONTENTS

COVER:
DEEP CREEK NATIONAL PARK
KANGAROO ISLAND



SOUTH AUSTRALIA 4

WHERE ARE WE? 5

GETTING TO SOUTH AUSTRALIA 6

ADELAIDE (PORT ADELAIDE PASSENGER TERMINAL) 8

ADELAIDE HILLS 14

BAROSSA 16

MCLAREN VALE WINE REGION 17

VICTOR HARBOR, FLEURIEU PENINSULA (ANCHORAGE) 18

PENNESHAW, KANGAROO ISLAND (ANCHORAGE) 20

PORT LINCOLN, EYRE PENINSULA (PORT) 22

WALLAROO, YORKE PENINSULA (PORT) 24

CLARE VALLEY 25

ROBE, LIMESTONE COAST (ANCHORAGE) 26

PRE & POST TOURING & LUXURY ACCOMMODATION 28

EVENTS SOUTH AUSTRALIA 30

CONTACT US 32

SOUTH AUSTRALIA

South Australia is home to some of Australia's most celebrated wine regions, including the Barossa, Coonawarra, Clare Valley, Adelaide Hills and McLaren Vale. Adelaide is a member of the exclusive Great Wine Capitals Global Network, celebrating South Australia's world-wide reputation for premium food and wine tourism.

It offers world-renowned nature-based experiences, particularly on Kangaroo Island and the spectacular west coast that stretches from Port Lincoln to Ceduna.

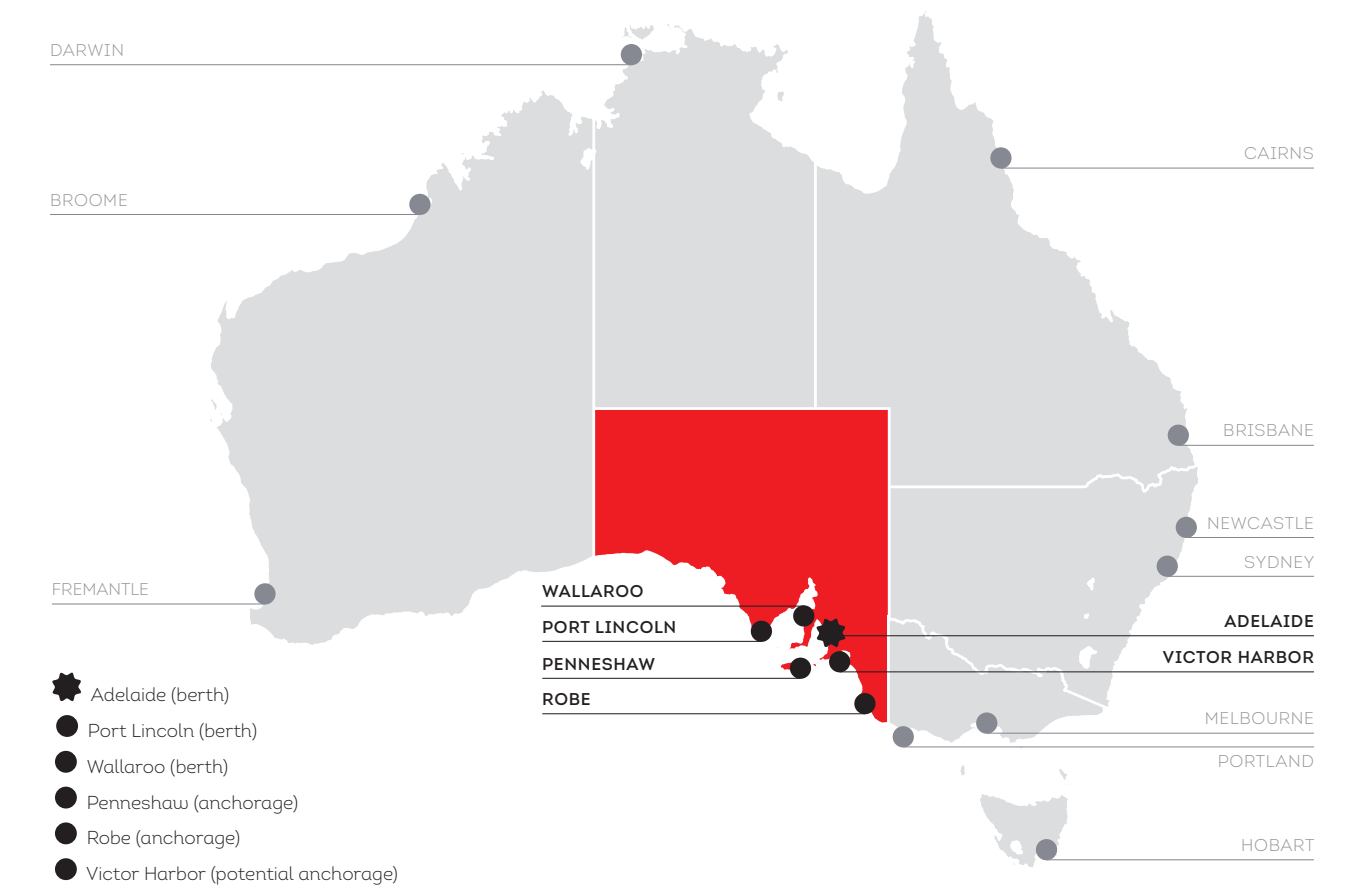
A range of berths and anchorages are offered, with access to some of Australia's finest natural treasures. South Australia's event calendar is full of world-class entertainment that attracts international, national and local audiences. Events including the Santos Tour Down Under international cycling event and the Adelaide Fringe Festival are just two examples. From premium food & wine experiences, arts & cultural festivals to motorsport, South Australia is home to events year-round.

The South Australian Tourism Commission

The South Australian Tourism Commission actively supports the cruise industry in South Australia by investing in infrastructure, building strong partnerships and working with cruise lines to deliver new and dynamic itineraries. We work closely with industry stakeholders, tourism operators and cruise lines to attract more cruise ships to South Australian ports and anchorages. We are responsible for encouraging investment into critical cruise ship infrastructure to cater for business growth potential and manage the Cruise ship Welcome Program offered at all ports and anchorages in partnership with key state and regional stakeholders. We work with South Australia's tourism industry to create desirable experiences for cruise passengers and ensure key South Australian cruise industry partners (Flinders Ports, state and local governments and regional communities) are working together collaboratively to create a desirable destination.

We've developed this publication to support cruise lines and inbound tour operators as they plan the perfect itinerary for their cruise passengers and help them experience the very best South Australia has to offer.

Where are we?



South Australia's Cruise Ports & Anchorages



GETTING TO SOUTH AUSTRALIA

BY SEA

The Port Adelaide Passenger Terminal at Outer Harbor is 23 kilometres (14 miles) from the heart of the city, with the Outer Harbor Railway Station only 150 metres (164 yards) from the terminal providing easy access to the city centre. The South Australian Tourism Commission has a Cruise Ship Welcome Program for cruise passengers arriving into our ports, which includes visitor information, welcome activations and directional support. Domestic and international cruise lines that visit our state acknowledge South Australia's Welcome Program as one of the best in Australia, with a high level of passenger satisfaction.

flindersports.com.au

BY AIR

Adelaide Airport is located six kilometres (three miles) from the city centre, only a 15-minute drive away and arguably the most conveniently located of all Australia's capital city airports. Adelaide Airport is 35 minutes from the Port Adelaide Passenger Terminal. Adelaide Airport services regional, domestic and international travellers in one passenger terminal. The award-winning facility is a modern, customer friendly airport that incorporates the latest in design and technology. Atura Hotel is based at the airport terminal for convenience and shuttle bus services are available to all major city centre hotels

adelaideairport.com.au

BY RAIL

Interstate trains operated by Journey Beyond arrive and depart from the Adelaide Parklands Rail Terminal, which is just three kilometres (two miles) west of the city centre. The Indian Pacific operates between Sydney, Adelaide and Perth; The Ghan operates between Adelaide, Alice Springs and Darwin; The Great Southern operates between Adelaide and Brisbane, and The Overland operates between Melbourne and Adelaide.

DISTANCE FROM ADELAIDE	DISTANCE (NAUTICAL MILES)	DISTANCE (TIME)
FREMANTLE	1434	2 days, 19 hours
PORT LINCOLN	162	8 hours
WALLAROO	197	10 hours
KANGAROO ISLAND	60	3 hours
ROBE	178	9 hours
VICTOR HARBOR	95	5 hours
MELBOURNE	514	1 day, 2 hours
HOBART	756	1 day, 14 hours
SYDNEY	953	2 days, 1 hour





SOUTH AUSTRALIAN PORTS & ANCHORAGES

South Australia has three berths and three anchorages available for cruise lines to experience 'Southern Ocean Cruising' within Australia. The berths available are at the Port Adelaide Passenger Terminal at Outer Harbor, the Port Lincoln Wharf (Eyre Peninsula), and the Wallaroo Wharf (Yorke Peninsula). Anchorages are located at Penneshaw (Kangaroo Island), Victor Harbor (Fleurieu Peninsula) and Robe (Limestone Coast). Expedition vessels are also visiting the islands around Eyre Peninsula and anchorages in the Fleurieu Peninsula.

PORT ADELAIDE PASSENGER TERMINAL AT OUTER HARBOR

As the state's capital cruise ship port, the Port Adelaide Passenger Terminal can cater for the largest of cruise liners – one of only a few ports nationally that can. The port has a deep-water channel, large swing basin and a newly renovated terminal building with flexibility and easy access in/out of the secured area. The terminal allows for full or partial passenger turnarounds, allowing sector cruising or home porting offering itineraries in and out of Adelaide and is equipped for customs and quarantine facilities. With four berths available, Port Adelaide can cater to multiple cruise visits at one time.



PORT ADELAIDE PASSENGER TERMINAL CHECKLIST

- Cruise Ship Welcome Program visitor information service
- Taxi services
- Metro train station: 35 minutes to city
- Tour coach areas
- Air-conditioned terminal building
- 24 hour security
- Wheelchair accessibility
- Toilet facilities
- Pilot available
- Tug available
- Port and shipping services including: towage, mooring, garbage, waste disposal, fresh water, emergency services and repair facilities
- Max draft: 11.2 metres; tidal variation: 2.5 metres
- Length of wharf: 368 metres
- Closest airport: Adelaide Airport 20km



ADELAIDE

NESTLED BETWEEN THE SEA & THE HILLS

Adelaide is the capital of South Australia, a beautiful city nestled between the sea and the hills. It is a vibrant and accessible city that relishes good living, fine food, wine and the arts in beautiful surroundings – more than a million people call it home. Classic Australian architecture and cultural attractions are within easy walking distance of Rundle Mall, the major shopping precinct. The Adelaide Hills, Barossa Valley and Fleurieu Peninsula (McLaren Vale) are within easy reach of the port for shore excursions.

NORTH TERRACE – ADELAIDE'S CULTURAL BOULEVARD

South Australia's history is alive on North Terrace. Victorian buildings line the street with elegant statues and plaques displaying the rich culture of the State. Here, passengers can explore the South Australian Museum, home to the largest collection of Australian Aboriginal cultural objects in the world, as well as many other national treasures. Right next door is the Art Gallery of South Australia, and then it's a short stroll to the Adelaide Botanic Garden, a 16-hectare oasis in the heart of the city.



FOOD & WINE

Don't miss the Adelaide Central Market – it is a feast for the senses! The market is a mecca for foodies and filled to the brim with fresh local produce, from fruit to smallgoods, cheeses and much more. The National Wine Centre is the stop for the wine buffs, with more than 200 wines on tasting (tasting fees apply) in a unique building that also houses a free interpretive journey through the Australian wine history.

Penfolds Magill Estate offers passengers a premium winery experience just 15 minutes from the city. South Australia is also home to Cooper's Brewery and Haigh's Chocolates – South Australian family owned businesses making premium products.

UNIQUE EXPERIENCES

For the daring traveller and sports lover, RoofClimb Adelaide Oval will be an experience to remember. Tour groups are taken across the Oval's unique roof top along the Western and Riverbank stands, during the day, at sunset and at night. Amazing city views are guaranteed.

The Tandanya National Aboriginal Cultural Institute shows the diversity and vibrancy of Aboriginal and Torres Strait Islander art and culture. It is Australia's oldest Aboriginal-owned and managed multi-arts centre and it hosts many innovative exhibitions. The popular shop stocks authentic art and items from Indigenous communities all over Australia.



MUST SEE & DO

- ▶ South Australian Museum
- ▶ Art Gallery of SA
- ▶ Adelaide Botanic Garden
- ▶ Adelaide Central Market
- ▶ National Wine Centre of Australia
- ▶ Penfolds Magill Estate
- ▶ Cooper's Brewery
- ▶ Haigh's Chocolates
- ▶ RoofClimb Adelaide Oval
- ▶ Adelaide Zoo
- ▶ Adelaide's laneways and hidden bars



SHOPPING LIST

- ▶ Rundle Mall
- ▶ Jetty Road Glenelg
- ▶ Harbour Town Premium Outlets
- ▶ Hyde Park
- ▶ Parade Norwood
- ▶ Burnside Village
- ▶ Ebenezer Place

SHOP 'TIL YOU DROP

Rundle Mall is the shopping heart of Adelaide, with more than 700 retail stores, three major department stores and 15 arcades. The Mall is a renowned venue for performances, promotions and events, from fashion parades to buskers and street performers. Adelaide's Harbour Town Premium Outlet Shopping Centre (located near the airport) has over 100 brand direct outlets and welcomes groups and tours.

To the south of the city, prestigious King William Road at Hyde Park (ten minutes from the city centre) is home to big name designers and smaller fashion houses offering everything from elegant classics to original, funky fashion. East of the city, The Parade in Norwood (ten minutes from the city centre) is home to an array of retailers from large brands to smaller boutiques.

Burnside Village Shopping Centre (five minutes from the city centre) is unlike any other shopping precinct in South Australia, with a unique mix of retail stores making it one of Adelaide's best shopping experiences. Ebenezer Place, just off Rundle Street in the city's east-end is home to some unique independent retailers for those seeking something a little bit different.



BEACHSIDE

Glenelg is Adelaide's most popular seaside destination. It is alive with people enjoying the sun, sand and sea along the foreshore. Visitors can stroll along the jetty, browse through hundreds of shops, dine at sidewalk cafés along Jetty Road or enjoy fresh seafood on the Holdfast Shores Marina. Take a short cruise to swim with dolphins with Temptation Sailing or explore the Glenelg precinct. The Beachouse offers fun and entertainment for younger visitors with arcade games, mini golf and water slides. Moseley Square, where Jetty Road meets the beach, is the terminus for the city-to-bay tram and in the summer months, visitors can enjoy Australia's only beach club on the sand, Moseley Beach Club.

PORT ADELAIDE

Port Adelaide, just 20 minutes from the cruise terminal, is home to the charming Maritime Museum (and its iconic lighthouse), the National Railway Museum and the Aviation Museum. The Port has many hidden treasures, including a colourful range of authentic Aboriginal art and gifts at Better World Arts. Visitors can take a walk along the wharves and dockside streets with local guides and discover its strong maritime heritage or enjoy a local brew at Pirate Life Brewery.

ADELAIDE HILLS

LAND OF THE LONG LUNCH



In the Adelaide Hills visitors can taste some of Australia's best cool climate wine, food and produce, straight from nature's top shelf. They'll step into an enchanted land where an afternoon of exquisite food and wine stretches both time and the imagination.

They'll be able to linger longer at wonderful places, savouring the moments as well as the flavours. In a once-in-a-lifetime opportunity, visitors can get close to Australia's fascinating wildlife and walk amongst kangaroos and emus, stopping to hold a koala and feed a potoroo.

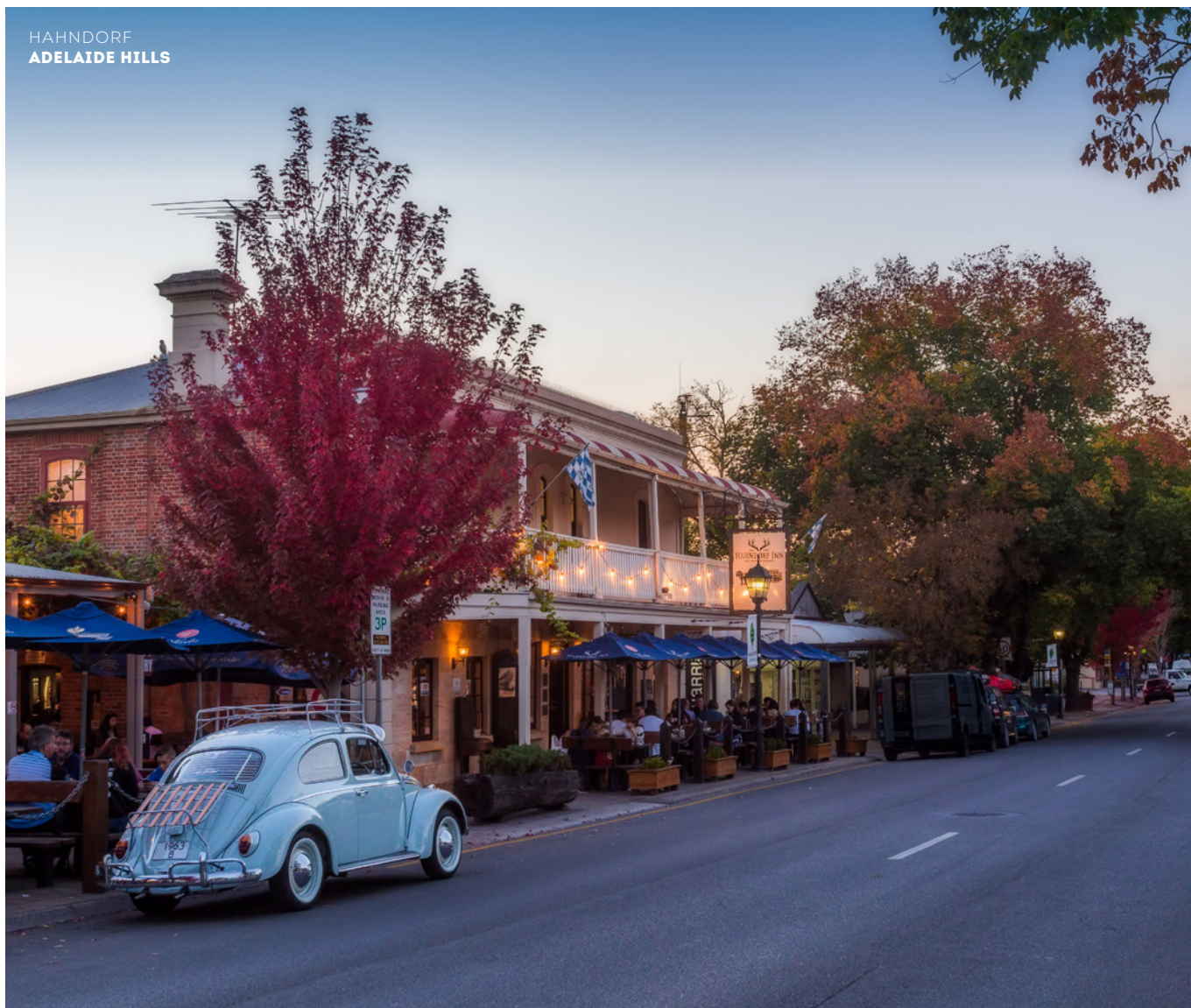
This region is best reached by shore excursions or private tours. Public transport is possible, but it can be challenging to reach destinations at the desired times. The Adelaide Hills are approximately one hour from the cruise terminal by coach and are a gateway to fantastic scenic, wildlife, food and historic experiences.

HAHNDORF

This pretty Adelaide Hills township is one of the oldest in South Australia and the oldest surviving German settlement in the nation. Many famous artists have lived and worked in Hahndorf, which is a haven of colour all year round. Today, it's home to dozens of gourmet food outlets, German-style pubs, art galleries and quirky shops – many housed in charming settlers' cottages dating back to the 1840's. Hahndorf has an eclectic blend of places to discover with authentic artisan producers and family-friendly activities.

CLELAND WILDLIFE PARK

Visitors can wander freely among kangaroos, wallabies and emus, as well as see dingoes and Tasmanian devils up close. This wildlife park is famous for its up-close-and-personal koala encounters. Guests can walk through forests, aviaries and animal enclosures to see the very best of Australian wildlife.



ADVENTURE MOUNT LOFTY BIKE ABOUT TOURS

Adventure lovers can see Adelaide in a totally different light on a downhill E-bike ride. Visitors can travel to Mount Lofty, collect an e-bike, helmet and briefing before a short ride to Cleland Wildlife Park where they'll meet many native animals. After a delicious morning tea, they can continue their descent to the Mount Osmond, riding through stunning natural bushland.



MUST SEE & DO

- ▶ Historic Hahndorf
- ▶ Hold a koala at Cleland Wildlife Park
- ▶ Art galleries
- ▶ Gourmet food and premium wines
- ▶ Mount Lofty lookout
- ▶ Mount Lofty Botanic Gardens
- ▶ Jurlique Farm
- ▶ Strawberry picking at Beerenberg Farm
- ▶ Warrawong Wildlife Sanctuary
- ▶ Grunthal Brew & Udder Delights



35KM (22 MILES) FROM THE PORT ADELAIDE
PASSENGER TERMINAL, APPROX. 50 MINUTES

BAROSSA

AUSTRALIA'S DESTINATION FOR FOOD, WINE & CULINARY DELIGHT

A visit to the Barossa is a taste of the good life. It gives visitors a gastronomic experience that is second to none, with the world-famous Barossa Valley shiraz and Eden Valley riesling, artisan produce and many acclaimed restaurants.



MUST SEE & DO

- ▶ 80+ cellar doors
- ▶ Art galleries
- ▶ Local markets
- ▶ Blend your own wine
- ▶ Maggie Beer's Farm Shop
- ▶ Gourmet food
- ▶ Cooking schools and gin blending
- ▶ Yalumba Cooperage
- ▶ Segway Vineyard Tour – Seppeltsfield Winery



76KM (47 MILES) FROM THE PORT ADELAIDE
PASSENGER TERMINAL, APPROX. 50 MINUTES

BAROSSA HERITAGE, FOOD & WINE

The Barossa is arguably the epicentre of Australia's wine industry. As one of the world's greatest wine regions it is full of history, culture and flavours. Home of labels large and small, such as Jacob's Creek, Henschke and Wolf Blass, the region has more than 150 wineries and 90 cellar doors, as well as galleries, picturesque villages and markets. There are many opportunities to tailor sumptuous wine and local produce shore excursions. Visitors can take a once-in-a-lifetime opportunity to blend their own wine at the Penfolds Winemakers' Laboratory using Grenache, Shiraz and Mataro: the same trio of varieties in the famous Penfolds Bin 38. Each visitor is presented with their own personalised bottle of wine to take home.

Passengers can also visit Maggie Beer's Farm Shop: Maggie is much loved Australian cook, writer, television presenter and founder of Maggie Beer products. The shop offers tastings and sales of her full product range, including limited edition seasonal produce. Guests can browse amongst her personally selected regional specialty goods, purchase one of her signed books or simply sit back and take in the view. Maggie Beer's Farm Shop is a food haven where visitors can enjoy all day picnic food.

MCLAREN VALE

FLEURIEU PENINSULA WHERE THE SEA MEETS THE VINES



M McLaren Vale is the gateway to the Fleurieu Peninsula, with stunning natural scenery of rolling hills and vineyards, all bounded by picturesque beaches and rugged coastline. With its idyllic Mediterranean style climate, rich vineyards and stunning vistas, it's a place where visitors can really taste the difference.

McLaren Vale is approximately 70 minutes from the cruise terminal by coach and is best suited to shore excursions and private tours. It is filled with beautiful scenery, more than 100 cellar doors and fantastic local produce, ranging from olives to almonds.



MUST SEE & DO

- ▶ 100+ cellar doors
- ▶ Off-road adventures
- ▶ d'Arenberg Cube
- ▶ Blend your own wine
- ▶ Artisan cheeses
- ▶ Craft beer
- ▶ Handmade chocolates
- ▶ Art galleries



**65KM (40 MILES) FROM THE PORT ADELAIDE
PASSENGER TERMINAL, APPROX. 1HR 20 MIN**

MCLAREN VALE FOOD & WINE

The foundations of McLaren Vale wines were laid when the first vines were planted in 1838; today there are over 100 cellar doors to explore. The food here is as renowned as the wine, from handmade cheeses and chocolates to cellar door tasting platters and fine dining.

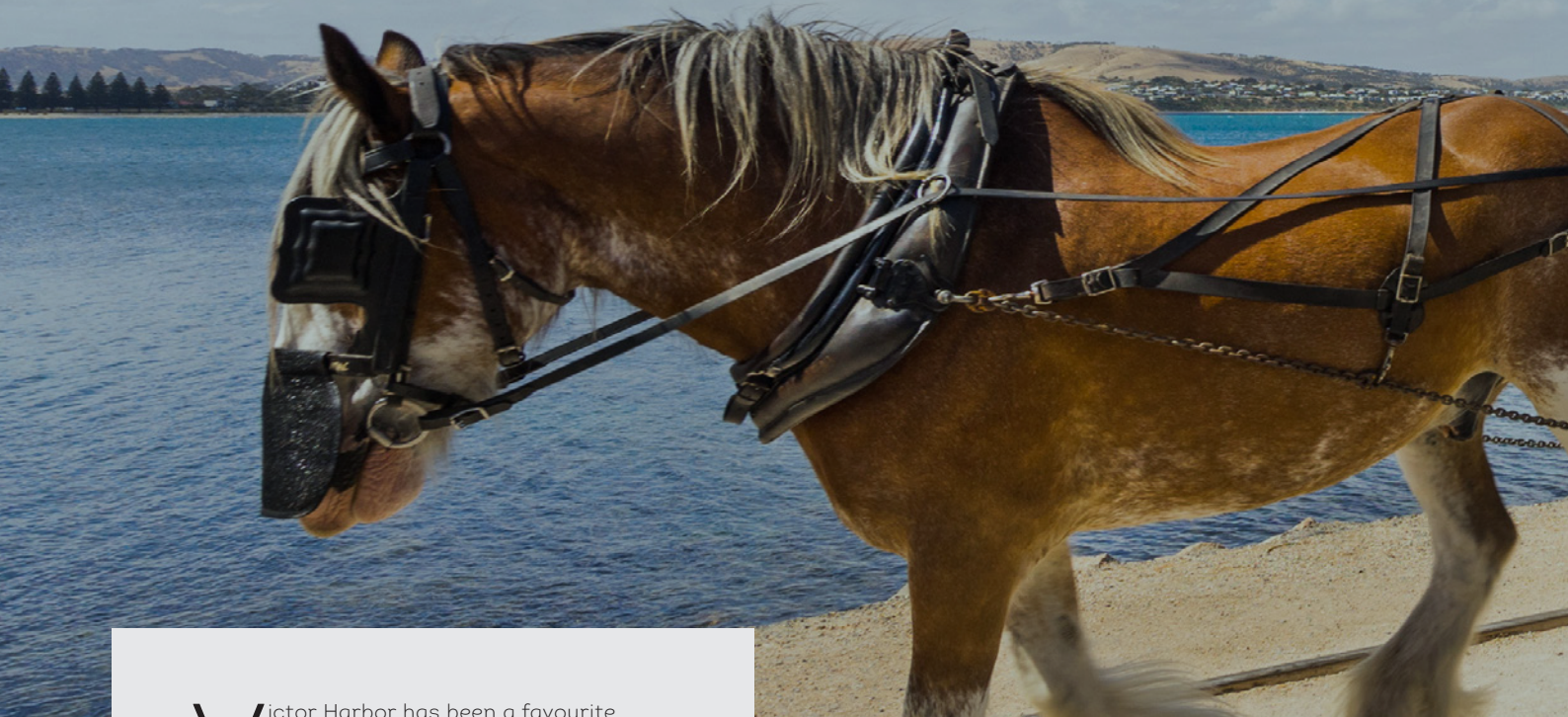
On the McMurtrie Mile, the locals share their passion for the good things in life: great wine, artisan beer, beautiful scenery, delicious local products and vibrant art. Here, six good neighbours have joined together to offer the very best of McLaren Vale on a single street, in one great culinary experience.

Unforgettable off-road adventures showcase the hidden treasures of the McLaren Vale wine region. Away from the crowds, visitors can experience a thrilling beach drive and indulge in delicious handmade canapes, award winning local wines and beers at uninterrupted secret locations.

Guests can visit the unique d'Arenberg Cube and taste some fine wines, experience hosted masterclasses, a la carte or degustation dining, explore the contemporary art museum or play winemaker for the day and blend their own wine.

VICTOR HARBOR

FLEURIEU PENINSULA OUR COASTAL PLAYGROUND



Victor Harbor has been a favourite holiday destination with South Australian families since the late 1800s. The town overlooks beautiful Encounter Bay with a coastline featuring the huge rock outcrop of The Bluff and the very popular Granite Island.

Victor Harbor offers a potential anchorage for smaller cruise ships and expedition vessels, with the option of taking tenders to Granite Island (joined to the mainland by a 600-metre causeway), to a tourist vessel pontoon along the causeway or zodiacs down on the beach.

The township is right at the landside of the causeway, offering visitors all amenities, cafés, shops, a Visitor Information Centre and a meet and greet service. The famous McLaren Vale wine region is only a 30-minute drive away from Victor Harbor.



MUST SEE & DO

- ▶ Horse Drawn Tram
- ▶ Granite Island
- ▶ White sand beaches
- ▶ Shops, cafes and restaurants
- ▶ Penguins, dolphins and sea lions
- ▶ Oceanic Victor
- ▶ Marine birdlife
- ▶ Big Duck Boat Tours

BEACHSIDE FUN

Granite Island is made special by having the world's only daily Horse Drawn Tram service that began operating in 1886. Encounter Bay is blessed with a classic Mediterranean climate that makes Victor Harbor a great destination all year round. Long expanses of white sandy beaches offer beautiful vistas and water activities, from swimming to stand-up paddle boarding. With the main street nearby offering shops, cafés and restaurants, there is something for all guests to enjoy.

WILDLIFE EXPERIENCES

Take a marine adventure with Big Duck and see dolphins, sea lions and marine birdlife. Or take a Horse Drawn Tram ride to Granite Island and search for little penguins in the nooks and crannies of the unusual rock formations. For a slightly different experience, Urimbirra Wildlife Park is a 40-acre open range wildlife park which includes 16 acres of wetland bird sanctuary where your guests can see kangaroos, wallabies, koalas, emus, dingoes and wombats.

For a glimpse into the whaling history of the region, visit the Whale Centre in the middle of town. The heritage building features interactive exhibits for all ages on the surrounding whale populations and the migration path of the Southern Right Whale. Whale spotting is a popular activity on the Fleurieu Peninsula with sightings in the cooler months of June to September.



VICTOR HARBOR ANCHORAGE

Victor Harbor offers a potential anchorage for smaller cruise ships to tender ashore via a pontoon on the Victor Harbor Causeway (to Granite Island) or via zodiacs to the beach at the town centre. Passengers can explore the beautiful township of Victor Harbor and access spectacular Fleurieu Peninsula attractions, including the wineries of McLaren Vale such as the d'Arenberg Cube, foodie experiences and conservation & wildlife parks – all within a short drive (50km).



VICTOR HARBOR ANCHORAGE CHECKLIST:

- Visitor information services available
- Taxi services
- Wharf 300 metres from township
- Tour coach areas
- Day light hours shipping access to wharf
- Toilet facilities
- Tidal variation approx. 1 metre; 1-2 metre swells
- Closest airport: Adelaide Airport 86km



PENNESHAW

KANGAROO ISLAND WILD, RUGGED, COASTAL

Kangaroo Island is one of the world's most pristine wilderness destinations where visitors are greeted by Australian sea lions basking on unspoilt white beaches and koalas dozing in lofty eucalyptus trees. It's an island that offers a haven for huge populations of native animals, as well as being a place of beauty and escape.

LOCAL PRODUCE – FOOD, WINE & SPIRITS

Visitors can experience a sheep dairy and taste the full range of sheep cheese and yoghurt products, touring both the dairy and factory.

Kangaroo Island has a range of local wineries and cellar doors with great wines, spectacular views and delicious local produce. Visitors can also try some locally produced spirits or blend their own at the much awarded and quirky Kangaroo Island Spirits distillery.

Kangaroo Island was declared a sanctuary for the Ligurian bee in 1885 and is now home to the only pure strain. Take your guests to a honey producer where they can see how the honey is produced, taste honey and honey ice cream, or buy some unique bee and honey souvenirs.

WILDLIFE ADVENTURES

Visit the only place in Australia where you can walk among the nation's third largest and most accessible colony of Australian sea lions as they doze in the sun at Seal Bay. Visitors can join a park ranger for a guided walk on the beach or take a self-guided tour on the boardwalk. Guests can take a short cruise and see the local dolphins in their natural habitat, enjoy the spectacular coastline and see other native animals, including sea eagles and osprey. 'Free flight' demonstrations with birds of prey give guests an entertaining experience at Raptor Domain. They'll meet an array of birds, including a majestic wedge-tailed eagle, a friendly barn owl and the laughing kookaburras. Kangaroos and wallabies are constant companions as guests travel around the Island. Travellers can also take a guided quad bike tour through 500 acres of winding bushland trails and open grassland to see kangaroos and other wildlife up close in their natural environment.

FLINDERS CHASE NATIONAL PARK

Some of the Island's most popular attractions are found in this large park, including Remarkable Rocks and Admirals Arch. These stunning works of nature have been shaped by the erosive forces of wind, sea spray and rain over some 500 million years. At Admirals Arch, a boardwalk and a viewing platform around a cliff face lead visitors to a colony of New Zealand fur seals.



PENNESHAW ANCHORAGE, KANGAROO ISLAND

Kangaroo Island is a very popular cruise destination in Australia. Cruise ships can tender passengers ashore from an anchorage at Penneshaw. A double tender landing platform is available at the Penneshaw Wharf, allowing easy walking access to the tour dispatch area and 500 metres from the town centre.

Passengers can walk from the wharf to the adjacent ferry terminal, where shore excursion departures are staged. A team of local volunteers welcome and help passengers as they leave tenders and provide a visitor information service in the tour staging area and around Penneshaw township. The sights and experiences of Kangaroo Island are best accessed via shore excursions. Although, some hire cars are available (pre-booking is essential) but there is no public transport on the island. A small, free shuttle bus for passengers with walking difficulties is available to help them access the nearby sights in Penneshaw.



SPOT THEM ALL

- ▶ Australian sea lions
- ▶ Koalas
- ▶ Dolphins
- ▶ Birds of prey
- ▶ Kangaroos & Wallabies
- ▶ Fur seals



PENNESHAW ANCHORAGE CHECKLIST:

- Cruise Ship Welcome Program visitor information service
- Town shuttle bus
- Tour coach areas
- Daylight hours shipping access to wharf
- Wheelchair accessibility
- Toilet facilities
- Tidal variation: 3 metres
- Purpose built pontoon and wharf for tender vessels
- Closest airport: Kingscote Airport 50km



MUST SEE & DO

- ▶ Seal Bay Conservation Park
- ▶ Kangaroo Island Wildlife Park
- ▶ Flinders Chase National Park
- ▶ Emu Ridge Eucalyptus
- ▶ Island Beehive
- ▶ Emu Bay Lavender
- ▶ Little Sahara
- ▶ Kangaroo Island Spirits

PORT LINCOLN

EYRE PENINSULA THE SEAFOOD FRONTIER

Port Lincoln on the Eyre Peninsula is known as the seafood capital of Australia. Surrounded by untouched bushland and beaches, the region is home to some of Australia's most breathtaking marine experiences. Visitors can swim with sea lions or great white sharks, or sample some of the world's most sought-after seafood, including Coffin Bay oysters, abalone and bluefin tuna.

PORT LINCOLN WHARF, EYRE PENINSULA

Port Lincoln is a commercial deep-water port catering for the largest of cruise ships visiting Australia. The wharf is 800 metres long and tour coaches can load alongside the ship. Transportation is provided from the wharf to the town centre, approximately 1.5 kilometres away, or passengers can walk there along a coastal path. The Cruise Ship Welcome Program volunteer service is offered to all visiting cruise lines and passengers.

MARINE ADVENTURES

Get the adrenalin pumping! Port Lincoln is the only place in Australia where visitors can dive with great white sharks. Tours take visitors to the blue waters off the coast and participants can watch from the boat or descend into the waters in a purpose-built cage.

For a gentler experience, visitors can try the thrill of being tantalisingly close to the sea's most playful mammals in the sheltered waters of Seal Cove. With experienced crew and a comfortable vessel, visitors are taken to the remote, pristine Hopkins Island where the resident sea lion population will welcome them with open flippers. Guests can swim, snorkel and take selfies with the dozens of playful mammals that surround the boat and frolic in their natural environment[^].

SEAFOOD CAPITAL OF AUSTRALIA

Guided tours introduce visitors to the wonders of the ocean. They can visit a multi-species fish processing factory and watch skilled filleters prepare the famous King George whiting, southern bluefin tuna, garfish, snapper and shark as well as oyster, scallop, and sea urchin opening. Prawns, lobsters, crabs and abalone are also on display as they're prepared for sale.

[^]Currently not available as pre-booked shore excursions



PORT LINCOLN WHARF CHECKLIST:

- Visitor information services available
- Taxi services
- Tour coach areas
- 24 hour security
- Toilet facilities
- Pilot available
- Tug available
- Closest airport: Port Lincoln Airport, 15km
- Max draft: 14.7 metres; tidal variation: 1.5 metres
- Length of wharf: 330 metres
- Port and shipping services including; towage, mooring, garbage, waste disposal, fresh water, emergency services and repair facilities.



MUST SEE & DO

- ▶ Shark cage diving
- ▶ Swimming with sea lions
- ▶ Pure Coffin Bay oyster tours and tastings
- ▶ Seafood tours and tastings
- ▶ Local wineries

CALYPSO STAR CHARTERS
EYRE PENINSULA

Guests enjoy oyster tastings along with a selection of smoked and pickled seafood at the end of the tour. Wine is also on the menu with a visit to Boston Bay Wines, located at the gateway to Port Lincoln and overlooking the beautiful Boston Bay. From the tasting room, visitors can enjoy a breathtaking vista of blue seas, cruising yachts and even a whale or two. Good soil, a gentle climate and the meticulous attention of highly regarded winemakers produce the truly special wines that guests can sample there.

SPECTACULAR COASTAL SCENERY & TOWN SIGHTS

Guests will be delighted with the magnificent sights along Whalers Way, including Cape Wiles and Cape Carnot, and from Winters Hill Lookout, overlooking the town of Port Lincoln. Drive past the incredible sand hills, deserted beaches, rugged islands and coastline of Coffin Bay National Park. Take a tour with Pure Coffin Bay Oysters and enjoy tasting oysters at their "Shellar Door" or straight out of the ocean on their Farm Tour. It doesn't get any fresher than that!



WALLAROO

YORKE PENINSULA

WALLAROO WHARF, YORKE PENINSULA

Wallaroo Wharf offers a berth for small to medium sized cruise ships. It is 313 metres long and one of South Australia's most popular regional commercial ports. Wallaroo is South Australia's newest port available for cruise itineraries.

The wharf offers a berth for small to medium size cruise ships. The wharf provides visitor information services and transportation options to the centre of town located approximately 1 kilometre away.



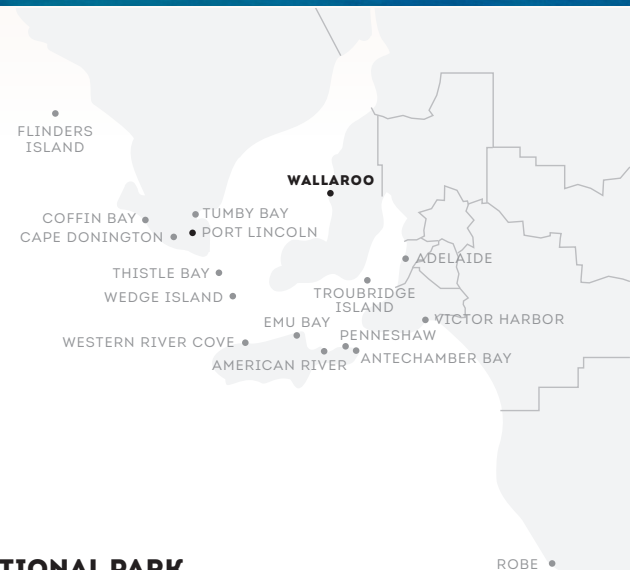
WALLAROO WHARF CHECKLIST:

- Visitor information services
- Taxi services
- Tour coach areas
- 24 hour security
- Toilet facilities
- Pilot available
- Tug available
- Max draft: 7.8 metres; Tidal variation: 2 metres
- Length of wharf: 313 metres
- Port and shipping services including: towage, mooring, garbage, waste disposal, fresh water, emergency services and repair facilities.
- Closest airport: Adelaide Airport (162km)



MUST SEE & DO

- ▶ Barley Stacks Wines
- ▶ Sunny Hill Distillery
- ▶ Try some local produce
- ▶ Kayak and paddle board hire
- ▶ Inneston Historic Walk
- ▶ Moonta Mines Museum
- ▶ Try a Cornish pastie
- ▶ Innes National Park
- ▶ Immerse yourself in Cornish history



INNES NATIONAL PARK

Located at the southern tip of the Yorke Peninsula, Innes National Park is a natural playground, brimming with beautiful beaches, outstanding surf and dramatic cliffs. Must-visit spots are Ethel Beach, Dolphin Bay and Cape Spencer Lighthouse. With majestic headlands, sweeping beaches and beautiful bays, Innes National Park is a wilderness haven with views that will leave you breathless.

CORNISH HERITAGE & MINING

The Yorke Peninsula is rich in natural heritage, especially from the copper mining times in the mid-19th century. The history is evident in the town of Wallaroo, Moonta and Kadina and is known to locals as the Copper Coast. Once home to 150 miners, shopkeepers and their families in the early 1900s, the gypsum mining town of Inneston in the heart of Innes National Park, is long abandoned. Discover the ruins of the post office, general store, factory, bakery and stables along the 2km Inneston Historic Walk. Wind your way through the ruins of the Moonta Mines National Heritage Area or enjoy a train ride into the town's copper mining past. The Moonta Mines Museum provides a fascinating glimpse into the town's Cornish history while a visit to the Moonta Mines Sweet Shop with its old-style lollies, sherbets, and delicious fizzy drinks is a must.

A legacy of the Cornish Miners, you can find more Cornish Pasties per square kilometre in each town (especially Moonta) than anywhere else in South Australia.



Wallaroo is a gateway to the charming Clare Valley, which is known as the 'heart of Australian Riesling' and the edge of the Outback. Explore the rolling countryside, golden canola fields, heritage towns, restaurants and art galleries and cycle among the vines on the 35-kilometre (22 miles) Riesling Trail.

Take a detour and stop at one of South Australia's beautiful pink lakes, Lake Bumbunga, on your way from Wallaroo to Clare. A great way to experience the Clare Valley is walking or cycling along the Riesling Trail, taking detours to wineries and other attractions. The Clare Valley boasts more than 30

cellar doors, some operating out of stone cottages, heritage buildings, state-of-the-art structures and farm sheds. Home to some of the oldest wineries and cellar doors in the state, the Clare Valley region is fast becoming known for its Shiraz and Cabernet varietals.

ROBE

LIMESTONE COAST CLIFFS, CAVES & NATURAL BEAUTY

Robe is the gateway to this beautiful region, that is home to the perfect combination of amazing beaches, stunning coastline and irresistible food and wine. The famed Coonawarra wine region, unique wetlands, underground wonders and volcanic landscapes are all nearby.

ROBE ANCHORAGE, LIMESTONE COAST

Robe offers an anchorage from which cruise ships can tender passengers to the sheltered pontoon in the Robe Marina, adjacent to the tour coach staging area.

The town centre and Visitor Information Centre are located just 500 metres away. A free town loop shuttle is offered to help independent passengers reach the highlights of this pretty coastal town.

This anchorage offers passengers a range of shore excursions. Visitors can explore the World Heritage Listed Naracoorte Caves, visit the St Mary McKillop Interpretive Centre in Penola, or taste their way through the world-famous Coonawarra wine region.





MAYURA STATION
LIMESTONE COAST

NATURAL WONDERS

Naracoorte Caves National Park is South Australia's only World Heritage site. The park is home to over 100 known fossil deposits, preserving the bones of megafauna that became extinct roughly 60,000 years ago. It preserves Australia's most complete fossil record of the past 500,000 years. Robe has stunning rugged coastline and beaches for miles. Further afield visitors can find the Blue Lake in Mount Gambier – a unique natural phenomenon that turns the lake from grey to a vibrant blue. It has to be seen to be believed. Visitors can embrace the limestone character of the region with a trip to Umpherston Sinkhole, also known as The Sunken Garden. Once a cave formed as limestone dissolved, a sinkhole was created when the top of the chamber collapsed – now it is a beautiful, lush garden area.



MUST SEE & DO

- ▶ World Heritage listed Naracoorte Caves
- ▶ Megafauna fossils
- ▶ Coonawarra's 40+ cellar doors
- ▶ Mayura Station Wagyu Beef Cellar Door
- ▶ St Mary MacKillop Interpretive Centre
- ▶ The Blue Lake
- ▶ Umpherston Sinkhole
- ▶ Kilsby Sinkhole
- ▶ Tour With Coonawarra Experiences



ROBE ANCHORAGE CHECKLIST:

- Visitor information services available
- Taxi services
- Wharf 300 metres from township
- Tour coach areas
- Day light hours shipping access to wharf
- Toilet facilities
- Tidal variation: ≈1.5 metres; 1-2 metre swells
- Tugs available
- Closest airport: Mount Gambier Airport 140km

UNIQUE FOOD & WINE

The special qualities of the terra rossa soils of the Coonawarra create the wonderful character of the region's wines, with more than 40 cellar doors to explore. With a heritage stretching as far back as 1860, Wynns is an icon of the Coonawarra. Guests can enjoy some time learning about this unique wine region and making their own blend to take home and share with friends. Mayura Station is located in the heart of the region and produces premium quality Wagyu beef. The Tasting Room is a Wagyu beef cellar door that showcases Australian contemporary 'head to tail' menus, tastings, and private dining. Mayura Masterclass can teach visitors all about the beef grades and quality and why Mayura Station Wagyu is so highly regarded. Closer to Robe, Mahalia coffee is a boutique roasting house using only the best raw coffee beans sourced from premier growing estates throughout the world.

FOR THE SPIRITUAL GUEST

Saint Mary of the Cross MacKillop, Australia's first Saint, was canonised on 17 October 2010. Penola is home to the Mary MacKillop Interpretive Centre where visitors can learn about how she met Father Julian Tenison Woods in 1860, and their dream to found new religious order, helping to meet the educational needs of isolated and disadvantaged children.

PRE & POST TOURING & LUXURY ACCOMMODATION



**3D impression*

SOUTHERN OCEAN LODGE, KANGAROO ISLAND

Kangaroo Island's first world-class wilderness lodge is set above the pristine limestone cliffs of Hanson Bay and commands spectacular ocean, beach and wilderness views. The lodge offers a unique fusion of nature and luxury with premium lodge facilities, contemporary dining and personal service. Guests can discover the magnificent coastal scenery and abundant wildlife for which the island is renowned, in impeccable style. The lodge was severely damaged as a result of the 2019/2020 bush fires, but has since undergone expansive restorations for reopening in 2023 as 'SOL 2.0'.

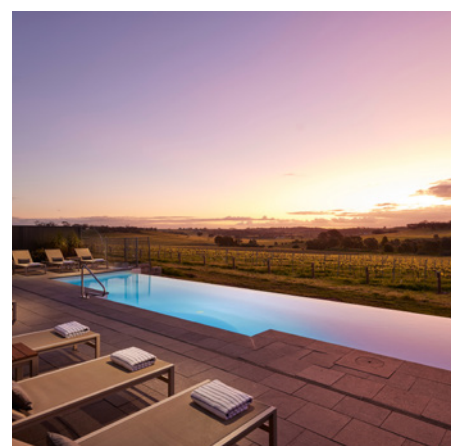
southernoceanlodge.com.au



KINGSFORD HOMESTEAD, BAROSSA

Kingsford Homestead is a luxury country retreat on the edge of the Barossa Valley, 45 minutes from Adelaide. Catering for 14 guests, there are six suites plus the Stonemason's Cottage at the rear of the property. Guests can enjoy three and five course dinners, country breakfasts served in the dining room, drinks and canapes served as the sun sets and evening meals accompanied by outstanding Barossa wines and great South Australian beers.

kingsfordhomestead.com.au



THE LOUISE, BAROSSA

The Louise is a highly-regarded luxury vineyard retreat surrounded by hundreds of acres of vines in the Barossa. The Louise offers absolute luxury and inspired design with private terraces and spacious ensuites. The restaurant, Appellation, is widely acknowledged as one of Australia's finest regional dining experiences, offering seasonal cuisine and an incredible wine list. Together, The Louise and Appellation are an outstanding food, wine and luxury accommodation destination.

thelouise.com.au



ARKABA CONSERVANCY, FLINDERS RANGES

Arkaba is a medium-sized sheep station in the beautiful Flinders Ranges. Craggy sandstone bluffs and dry creek beds lined with river red gums provide a quintessential Australian landscape. Dating from 1851, Arkaba Homestead offers a taste of classic Australian country hospitality with a few 'Wild Bush Luxury' touches to ensure comfort, style and a truly memorable outback experience. The resident chef provides traditional station cuisine infused with native elements.

arkabaconservancy.com

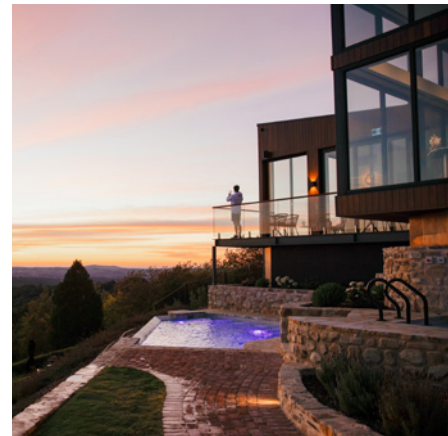


THE FRAMES, RIVERLAND

The Frames luxury accommodation offers three opulent and private retreats, overlooking the Murray River in the Riverland, South Australia. Designed to help couples rejuvenate and relax, each retreat has its own private pool, spa and balcony with unobstructed views of the Murray River. Fully self contained, the retreats are large, open and offer total privacy throughout both inside and outdoors. They exhibit the finest fit-outs and appointments - from the bed and linen, to appliances and the many and varied relaxation areas including the poolside outdoor kitchens.

The Frames is a 3 hour drive from Adelaide and a 1.5 hour drive from Mildura (Victoria).

theframesluxuryaccommodation.com.au



SEQUOIA LODGE, ADELAIDE HILLS

Sequoia Lodge features 14 contemporary, luxurious, sustainably designed suites with unparalleled tree-top views over the Piccadilly Valley, vineyards, villages, and bushland. Award Winning Fine Dining Restaurant, Hardy's Verandah, is less than a 100m stroll from guests suites. Guests can expand their culinary experience as they explore the iconic Adelaide Hills, Barossa and McLaren Vale wine regions curated for guests by our in-house Sommelier.

Just around the corner, guests can access the quintessential Australian experience with up close and personal encounters with Kangaroos, Koalas, Echidnas, Emus and more. Only a two-minute stroll sees guests able to wander the botanic gardens and hike the Heysen Trail.

sequoialodge.com.au

SANTOS TOUR DOWN UNDER
ADELAIDE HILLS

EVENTS SOUTH AUSTRALIA

The South Australian event calendar is full of programmed events and entertainment attracting international, national and local audiences. It focuses on the State's strengths of cycling, food, wine, motorsport, arts, culture and community participation.

OCTOBER

OZAsia Festival (Bold and contemporary Asian arts)
ozasia.adelaidefestivalcentre.com.au

NOVEMBER

Australian International 3 Day Equestrian Event
australian3de.com.au

National Pharmacies Christmas Pageant
southaustralia.com/products/adelaide/event/national-pharmacies-christmas-pageant

DECEMBER

VALO Adelaide 500
adelaide500.com.au

JANUARY

Santos Tour Down Under (UCI World Tour Cycling Event)
tourdownunder.com.au

World Tennis Challenge
worldtennischallenge.com

Tunarama Port Lincoln
tunarama.net

FEBRUARY – MARCH

Adelaide Fringe Festival
adelaidefringe.com.au

Fleurieu Film Festival
fleurieufilmfestival.com.au

Sealink Kangaroo Island Racing Carnival
sealink.com.au/kangaroo-island/events/kangaroo-island-cup

MARCH

Adelaide Festival of Arts
adelaidefestival.com.au

WOMAdelaide World Music Festival
womadelaide.com.au

APRIL

Tasting Australia
tastingaustralia.com.au

LIV Golf
livgolf.com/events/adelaide



CONTACT US

South Australian Tourism Commission Destination Development

E: DestinationDevelopment@sa.gov.au

P: +61 8 8463 4500

Postal address

GPO Box 1972
Adelaide South Australia 5001

Websites

southaustralia.com
tourism.sa.gov.au



DISCLAIMER

The contents of this document do not constitute investment or development advice and should not be relied upon as such. No reader should act on the basis of any information contained in this document without first independently verifying and examining that information and seeking appropriate independent professional advice that takes into account their own particular circumstances. The South Australian Tourism Commission and the State of South Australia, its agents, officers and employees make no representations and provides no warranties, expressed or implied, with respect to the accuracy, completeness, currency or reliability of any of the information contained in this document; and accept no liability whatsoever for any loss or damage resulting from the use of the information contained in this document or any reliance placed on it.

This document and all material contained herein is the property and copyright of South Australian Tourism Commission. It may not be reproduced without the prior written consent of the South Australian Tourism Commission.

Produced by the South Australian Tourism Commission March 2023.