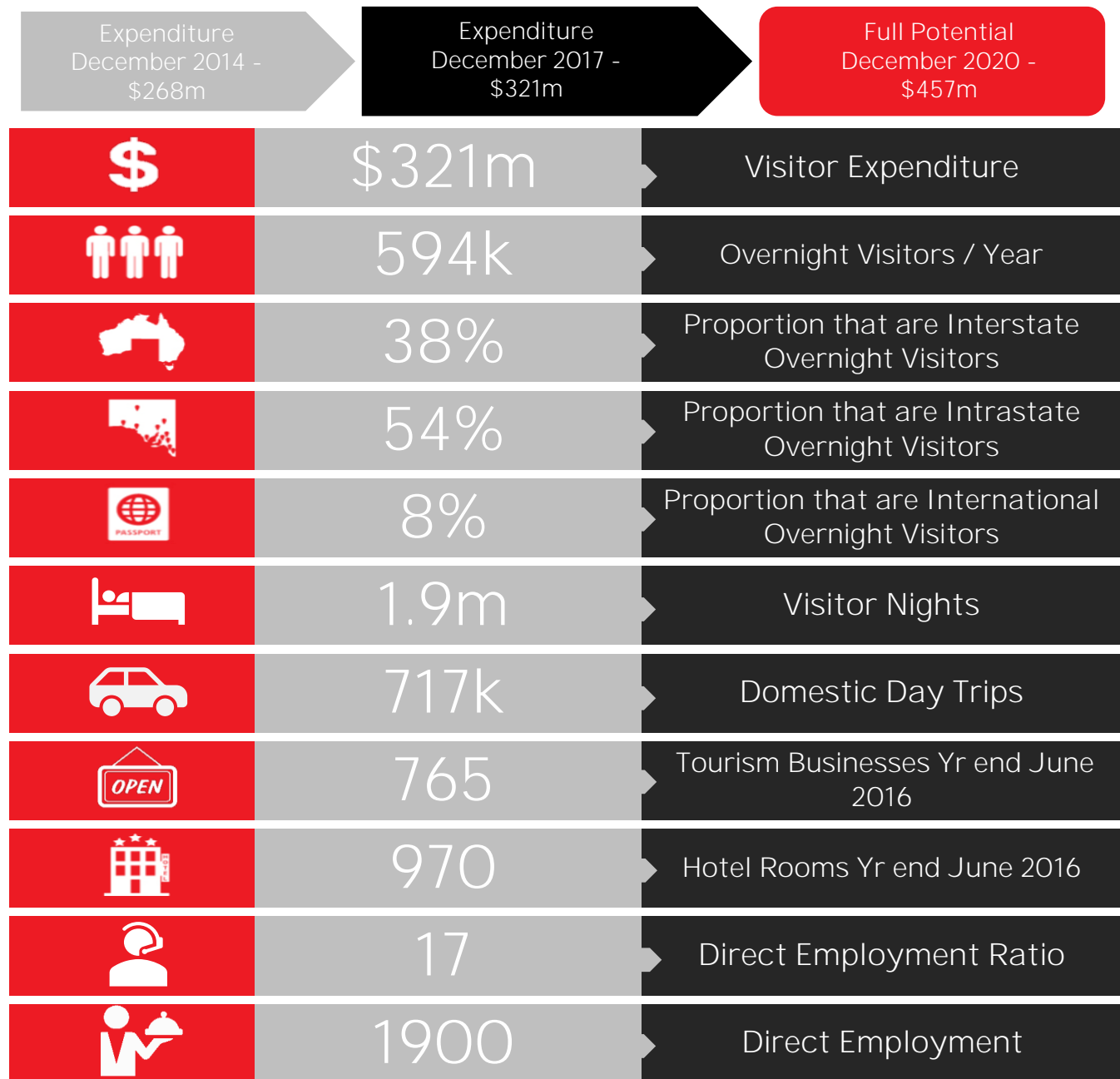




The Value of Tourism on the Limestone Coast 3 Year Annual Average to December 2017



Sources: Tourism Research Australia - NVS & IVS.

Employment Figures from the SA Regional Tourism Satellite Accounts 2016-17.

Tourism Business estimates are derived by TRA using data sourced from the Australian Bureau of Statistics (ABS), for FY 2015/2016.

Full potential relates to the regional contribution to the 2020 \$8 billion target - please refer to the South Australian Tourism Plan 2020.

Tourist Accommodation data are sourced from the ABS Survey of Tourist Accommodation, 15+ rooms, for the Year to June 2016.