

Regions: Accommodation in Australia

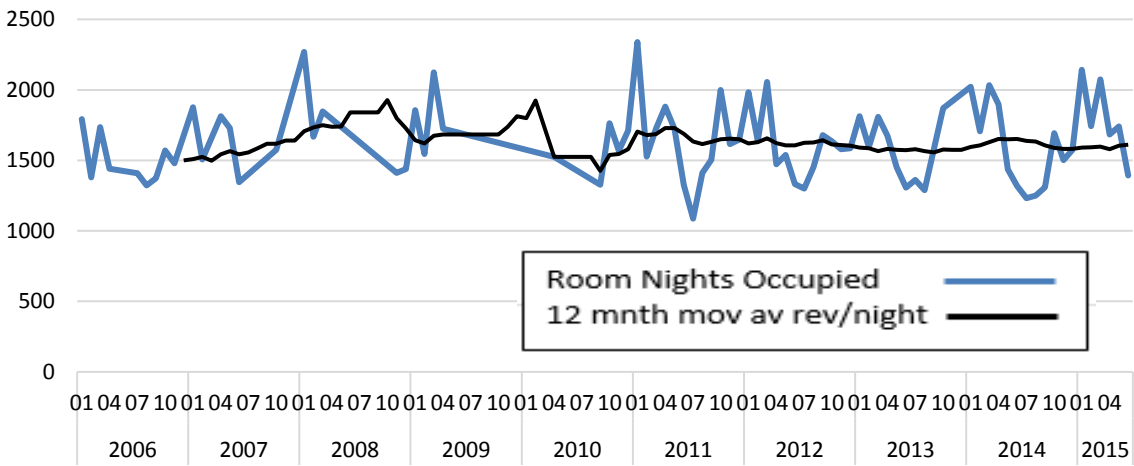
Hotels, motels and serviced apartments with 15+ rooms, by tourism region

		Yorke Peninsula (TR)									
		Supply		Demand		Occupancy		Takings		RevPar	
Y	M	Rooms	change	R/nights	change	%	change	\$	change	\$	change
2006	01	107	-	1792	-	54.0%	-	149,291	-	\$ 45.00	-
	02	107	-	1379	-	46.0%	-	109,477	-	\$ 36.50	-
	03	107	-	1735	-	52.3%	-	145,138	-	\$ 43.80	-
	04	107	-	1441	-	44.9%	-	123,957	-	\$ 38.60	-
	05	107	-	-	-	-	-	-	-	-	-
	06	107	-	-	-	-	-	-	-	-	-
	07	109	-	1410	-	41.7%	-	102,563	-	\$ 30.40	-
	08	109	-	1322	-	39.1%	-	115,006	-	\$ 34.00	-
	09	109	-	1372	-	42.0%	-	115,193	-	\$ 35.20	-
	10	-	-	1571	-	48.7%	-	127,029	-	\$ 39.40	-
	11	-	-	1480	-	47.4%	-	117,870	-	\$ 37.80	-
	12	-	-	-	-	-	-	-	-	-	-
2007	01	-	-	1876	5%	56.6%	+2.6%pts	155,779	4%	\$ 47.00	+\$2.00
	02	-	-	1507	9%	50.3%	+4.3%pts	120,340	10%	\$ 40.20	+\$3.70
	03	-	-	-	-100%	-	-	-	-100%	-	-
	04	107	-	1814	26%	56.5%	+11.6%pts	147,910	19%	\$ 46.08	+\$7.48
	05	107	-	1730	-	52.2%	-	144,269	-	\$ 43.49	-
	06	107	-	1345	-	41.9%	-	117,117	-	\$ 36.49	-
	07	-	-	-	-100%	-	-	-	-100%	-	-
	08	-	-	-	-100%	-	-	-	-100%	-	-
	09	-	-	-	-100%	-	-	-	-100%	-	-
	10	111	-	1574	0%	45.7%	-3.0%pts	136,671	8%	\$ 39.72	+\$0.32
	11	111	-	-	-100%	-	-	-	-100%	-	-
	12	111	-	-	-	-	-	-	-	-	-
2008	01	107	-	2270	21%	68.4%	+11.8%pts	197,912	27%	\$ 59.67	+\$12.67
	02	107	-	1667	11%	53.7%	+3.4%pts	136,980	14%	\$ 44.14	+\$3.94
	03	107	-	1846	-	55.7%	-	159,505	-	\$ 48.09	-
	04	-	-	-	-100%	-	-	-	-100%	-	-
	05	-	-	-	-100%	-	-	-	-100%	-	-
	06	-	-	-	-100%	-	-	-	-100%	-	-
	07	-	-	-	-	-	-	-	-	-	-
	08	-	-	-	-	-	-	-	-	-	-
	09	-	-	-	-	-	-	-	-	-	-
	10	-	-	-	-100%	-	-	-	-100%	-	-
	11	-	-	1412	-	42.8%	-	127,239	-	\$ 38.56	-
	12	-	-	1438	-	42.2%	-	133,273	-	\$ 39.08	-

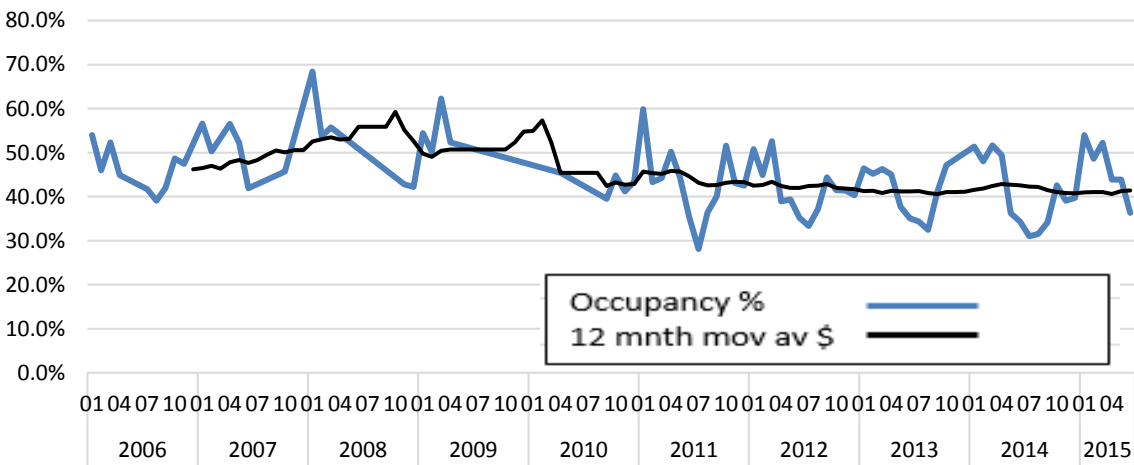
2009	01	110	+3	1856	-18%	54.4%	-14.0%pts	179,189	-9%	\$ 52.55	-\$ 7.12
	02	110	+3	1546	-7%	50.2%	-3.5%pts	131,601	-4%	\$ 42.73	-\$ 1.41
	03	110	+3	2125	15%	62.3%	+6.6%pts	194,392	22%	\$ 57.01	+\$8.92
	04		-	1725	-	52.3%	-	149,875	-	\$ 45.42	-
	05		-		-		-		-		-
	06		-		-		-		-		-
	07		-		-		-		-		-
	08		-		-		-		-		-
	09		-		-		-		-		-
	10		-		-		-		-		-
	11		-		-100%		-		-100%		-
	12		-		-100%		-		-100%		-
2010	01		-		-100%		-		-100%		-
	02		-		-100%		-		-100%		-
	03		-		-100%		-		-100%		-
	04		-	1524	-12%	45.4%	-6.9%pts	146,569	-2%	\$ 43.62	-\$ 1.80
	05		-		-		-		-		-
	06		-		-		-		-		-
	07	112	-		-		-		-		-
	08	112	-		-		-		-		-
	09	112	-	1327	-	39.5%	-	131,168	-	\$ 39.04	-
	10	127	-	1762	-	44.8%	-	181,006	-	\$ 45.98	-
	11	127	-	1569	-	41.2%	-	153,629	-	\$ 40.32	-
	12	127	-	1710	-	43.4%	-	171,724	-	\$ 43.62	-
2011	01	126	-	2339	-	59.9%	-	238,634	-	\$ 61.09	-
	02	126	-	1528	-	43.3%	-	161,330	-	\$ 45.73	-
	03	126	-	1725	-	44.2%	-	174,244	-	\$ 44.61	-
	04	125	-	1881	23%	50.2%	+4.8%pts	177,628	21%	\$ 47.37	+\$3.75
	05	125	-	1722	-	44.4%	-	189,397	-	\$ 48.88	-
	06	125	-	1325	-	35.3%	-	136,884	-	\$ 36.50	-
	07	125	+13	1087	-	28.1%	-	102,017	-	\$ 26.33	-
	08	125	+13	1412	-	36.4%	-	132,548	-	\$ 34.21	-
	09	125	+13	1505	13%	40.1%	+0.6%pts	143,842	10%	\$ 38.36	-\$ 0.68
	10	125	-2	1998	13%	51.6%	+6.8%pts	199,883	10%	\$ 51.58	+\$5.60
	11	125	-2	1615	3%	43.1%	+1.9%pts	156,873	2%	\$ 41.83	+\$1.51
	12	125	-2	1648	-4%	42.5%	-0.9%pts	158,481	-8%	\$ 40.90	-\$ 2.72

2012	01	126	1983	-15%	50.8%	-9.1%pts	195,390	-18%	\$ 50.02	-\$11.07	
	02	126	1639	7%	44.9%	+1.6%pts	153,493	-5%	\$ 42.01	-\$ 3.72	
	03	126	2055	19%	52.6%	+8.4%pts	203,705	17%	\$ 52.15	+\$7.54	
	04	126	+1	1472	-22%	38.9%	-11.3%pts	144,996	-18%	\$ 38.36	-\$ 9.01
	05	126	+1	1538	-11%	39.4%	-5.0%pts	152,117	-20%	\$ 38.94	-\$ 9.94
	06	126	+1	1331	0%	35.2%	-0.1%pts	130,411	-5%	\$ 34.50	-\$ 2.00
	07	126	+1	1299	20%	33.3%	+5.2%pts	125,036	23%	\$ 32.01	+\$5.68
	08	126	+1	1452	3%	37.2%	+0.8%pts	135,711	2%	\$ 34.74	+\$0.53
	09	126	+1	1680	12%	44.4%	+4.3%pts	164,644	14%	\$ 43.56	+\$5.20
	10	127	+2	1635	-18%	41.5%	-10.1%pts	146,759	-27%	\$ 37.28	-\$14.30
	11	127	+2	1579	-2%	41.4%	-1.7%pts	157,526	0%	\$ 41.35	-\$ 0.48
	12	127	+2	1586	-4%	40.3%	-2.2%pts	160,876	2%	\$ 40.86	-\$ 0.04
2013	01	126	1813	-9%	46.4%	-4.4%pts	187,817	-4%	\$ 48.08	-\$ 1.94	
	02	126	1595	-3%	45.2%	+0.3%pts	136,239	-11%	\$ 38.62	-\$ 3.39	
	03	126	1809	-12%	46.3%	-6.3%pts	161,561	-21%	\$ 41.36	-\$10.79	
	04	124	-2	1674	14%	45.0%	+6.1%pts	169,621	17%	\$ 45.60	+\$7.24
	05	124	-2	1450	-6%	37.7%	-1.7%pts	152,850	0%	\$ 39.76	+\$0.82
	06	124	-2	1306	-2%	35.1%	-0.1%pts	129,551	-1%	\$ 34.83	+\$0.33
	07	128	+2	1362	5%	34.3%	+1.0%pts	124,609	0%	\$ 31.40	-\$ 0.61
	08	128	+2	1289	-11%	32.5%	-4.7%pts	118,386	-13%	\$ 29.84	-\$ 4.90
	09	128	+2	1580	-6%	41.1%	-3.3%pts	135,275	-18%	\$ 35.23	-\$ 8.33
	10	128	+1	1870	14%	47.1%	+5.6%pts	168,243	15%	\$ 42.40	+\$5.12
	11	128	+1		-100%	-			-100%		-
	12	128	+1		-100%	-			-100%		-
2014	01	127	+1	2021	11%	51.3%	+4.9%pts	187,074	0%	\$ 47.52	-\$ 0.56
	02	127	+1	1707	7%	48.0%	+2.8%pts	152,958	12%	\$ 43.01	+\$4.39
	03	127	+1	2033	12%	51.6%	+5.3%pts	190,737	18%	\$ 48.45	+\$7.09
	04	128	+4	1896	13%	49.4%	+4.4%pts	180,710	7%	\$ 47.06	+\$1.46
	05	128	+4	1437	-1%	36.2%	-1.5%pts	137,033	-10%	\$ 34.53	-\$ 5.23
	06	128	+4	1318	1%	34.3%	-0.8%pts	120,577	-7%	\$ 31.40	-\$ 3.43
	07	128		1231	-10%	31.0%	-3.3%pts	108,914	-13%	\$ 27.45	-\$ 3.95
	08	128		1249	-3%	31.5%	-1.0%pts	113,006	-5%	\$ 28.48	-\$ 1.36
	09	128		1310	-17%	34.1%	-7.0%pts	115,016	-15%	\$ 29.95	-\$ 5.28
	10	128		1692	-10%	42.6%	-4.5%pts	154,348	-8%	\$ 38.90	-\$ 3.50
	11	128		1501	-	39.1%	-	125,390	-	\$ 32.65	-
	12	128		1574	-	39.7%	-	147,207	-	\$ 37.10	-
2015	01	128	+1	2141	6%	54.0%	+2.7%pts	199,990	7%	\$ 50.40	+\$2.88
	02	128	+1	1743	2%	48.6%	+0.6%pts	157,787	3%	\$ 44.03	+\$1.02
	03	128	+1	2073	2%	52.2%	+0.6%pts	194,620	2%	\$ 49.05	+\$0.60
	04	128		1684	-11%	43.9%	-5.5%pts	154,727	-14%	\$ 40.29	-\$ 6.77
	05	128		1740	21%	43.9%	+7.7%pts	166,769	22%	\$ 42.03	+\$7.50
	06	128		1392	6%	36.3%	+2.0%pts	127,987	6%	\$ 33.33	+\$1.93

Yorke Peninsula Nights Occupied



Yorke Peninsula Occupancy



Yorke Peninsula Takings

